

HOME FAN GUIDE

TRANMERE
ROVERS



WELCOME

Tranmere Rovers Football Club takes pride in ensuring that all our supporters have a memorable matchday experience at Prenton Park regardless of the results on the pitch.

The Tranmere Rovers Home Fan Guide has been designed to help you as a supporter enjoy your trip to Prenton Park.

This guide contains all the information you require to get the most out of your visit with us and includes directions to the stadium, the best place to park, matchday activities and the best food outlets to try.

If after reading this document you still have questions then please email **SLO@tranmererovers.co.uk**

Everyone at the Club would like to thank you for your interest in Tranmere Rovers and would like to wish you a safe journey both to and from the stadium. We look forward to welcoming you to Prenton Park.

STADIUM PLAN

THE KOP - This stand is home to all our famous songs and drums. If you want the best atmosphere then the Lower Kop is best for you but please be aware if it rains you aren't undercover. The Upper Kop does offer shelter from the elements but is accessed by a large number of steps which is worth bearing in mind if choosing to sit here. This stand has a big concourse with a wide choice of food outlets.

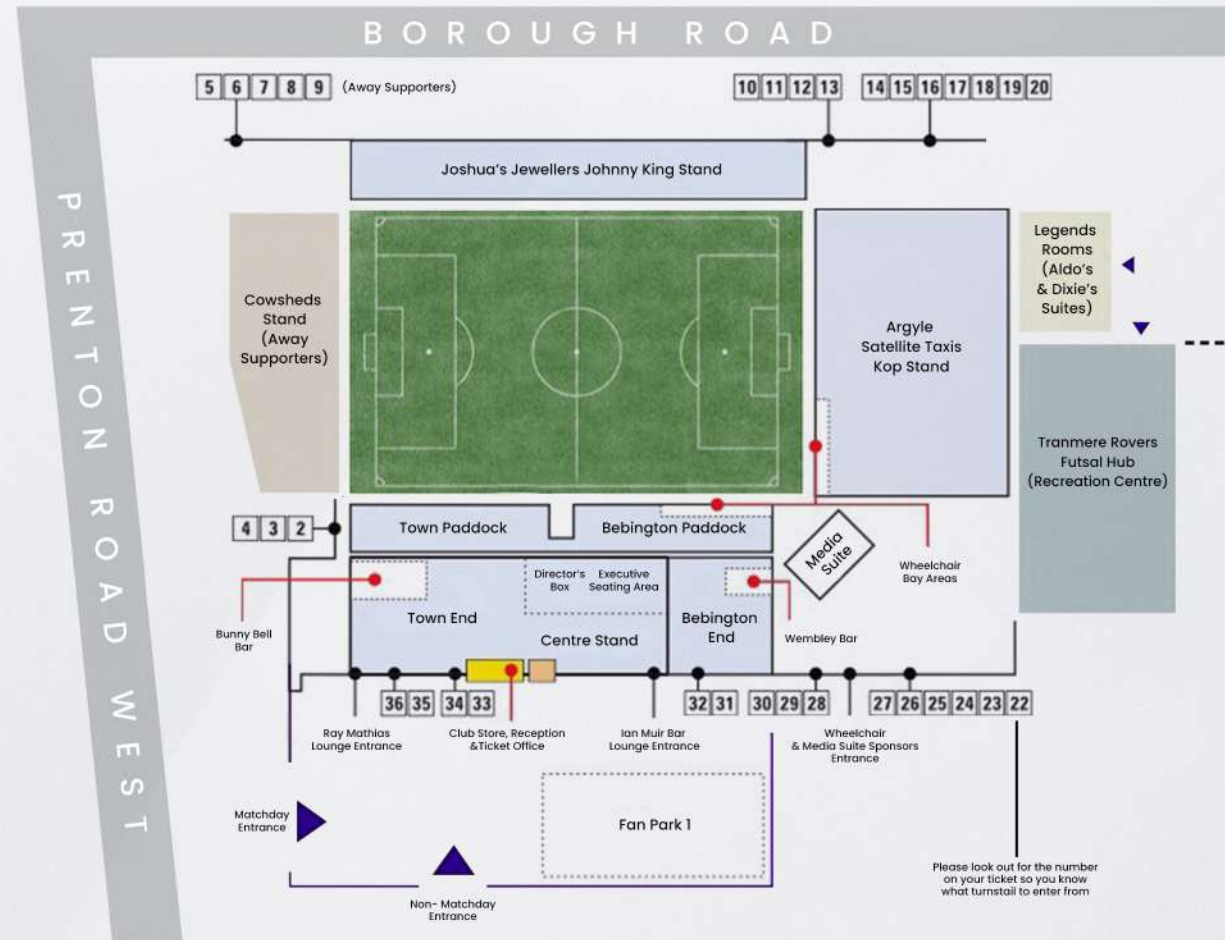
JOHNNY KING - If you want to be close to the action with a side view of the pitch, then this is the stand for you.

TOWN PADDOCK - Much like the Johnny King Stand, the Town Paddock is close to the action with a side view of the pitch. Fans in the Town Paddock also have access to an indoor bar (The Bunny Bell) as well as a catering outlet.

TOWN END - The Town End is the section we recommend for neurodiverse supporters, it has a side view of the pitch and is more of a quieter area of the ground.

BEBINGTON END - Ideal for a first time supporters this section is close to the Kop so you can soak up the atmosphere without being directly in it. Located inside the Bebington End concourse is the Wembley Bar and a Cowsheds Kiosk.

BEBINGTON PADDOCK - The Bebington Paddock is located beneath the Bebington End so you can still soak up the Kop atmosphere and be close to the match action. This section is ideal for younger fans who can watch the players pre-match warm up and if they are lucky enough, grab and autograph two.



TICKETS

Home fans are located in three areas of the stadium, The Main Stand which is split into four areas, Bebington End, Bebington Paddock, Town End and Town Paddock, The Johnny King Stand and The Kop.

The easiest way to purchase tickets is in advance at trfctickets.co.uk where you will get an e-ticket that can be downloaded to your apple/google wallet and scanned off your phone on the turnstiles. If you have any problems then please scan the QR code below for our "how to help" videos.

Alternatively, tickets can be bought in our Club Shop between the hours of 10am-5pm Monday-Friday and on a matchday from 10am.



To purchase tickets please scan the QR code



Get help purchasing tickets by scanning the QR code

Bebington Paddock, Johnny King stand by Joshuas Jewellers and Argyle Satellite Taxis Kop stand

£22	ADULT
£17	SENIOR (65+)
£15	YOUNG PERSON (18-22)
£15	DISABLED AND PERSONAL ASSISTANT
£9	JUNIOR (UNDER 18)
£5	ACCOMPANIED JUNIOR (U12)

Bebington End and Town End

£25	ADULT
£20	SENIOR (65+)
£18	YOUNG PERSON (18-22)
£18	DISABLED AND PERSONAL ASSISTANT
£9	JUNIOR (UNDER 18)
£5	ACCOMPANIED JUNIOR (U12)

Town Paddock - Bunny Bell Bar Access

£23	ADULT
£18	SENIOR (65+)
£16	YOUNG PERSON (18-22)
£16	DISABLED AND PERSONAL ASSISTANT
£9	JUNIOR (UNDER 18)
£5	ACCOMPANIED JUNIOR (U12)



TICKETS

Wheelchair Spaces - We have a total of 34 wheelchair spaces located in the stadium, 18 in The Bebington Paddock, 10 in The Kop and 4 in our hospitality area, all located undercover. Each wheelchair user ticket also includes a complimentary personal assistant ticket.

These tickets can be purchased online or in store.

Please note: In order to get your personal assistant ticket documents will need to be uploaded to your account stating you get enhanced rate PIP or medium/high rate DLA.

For further information on disability and accessibility tickets please scan the QR code



TAXIS

If you require a taxi we recommend you use our Club Sponsor, Argyle Satellite Taxis by calling **0151 201 1111** or download their app.



PARKING

There is a car park at Prenton Park which costs £7 per car, per game, or £6 if you purchase in advance at trftickets.co.uk. It is recommended that you book in advance as the car park is likely to sell out.

Please note: We have a limited number of accessible spaces that are available, these are prioritised to blue badge holders but a blue badge does not guarantee you a space.

The car park is located closest to the KOP and Bebbington End/Paddock turnstails. Beware of a residents parking scheme which is in operation on many of the roads surrounding Prenton Park.

The postcode for Prenton Park is CH42 9PY.

TRAVEL BY CAR

From the North

From Liverpool city centre, travel through the Kingsway (Wallasey) Mersey Tunnel and after the toll booths (there is a charge for vehicles), continue on the M53 to Junction 3. Take the first exit (signposted Birkenhead) and continue for approximately one mile passing Sainsbury's on the left hand side (keep in right hand lane). Turn right at the traffic lights at the Halfway House (pub), continue for 500 yards to the next set of traffic lights and turn left into Prenton Road West. The ground appears in front of you on the right hand side.

From South/East

M6, M56 and M53 to J4. Take the fourth exit from the roundabout onto the B5151 (Mount Road). Continue for two and a half miles and when Mount Road becomes Storeton Road, turn right onto Prenton Road West at the traffic lights. Prenton Park is on the right hand side in 200 yards.

TRAVEL BY RAIL



Nearest Stations

Conway Park / Birkenhead Central / Rock Ferry

From Liverpool Lime Street

Head for the Wirral Line lower level station and board a New Brighton or West Kirby train to Conway Park, or an Ellesmere Port or Chester train to Birkenhead Central or Rock Ferry.

From Chester

Board a Liverpool train and get off at Rock Ferry or Birkenhead Central.

From Birkenhead Central

Cross Argyle Street and walk along Borough Road which runs parallel to the flyover. Prenton Park is approximately a 20 minute walk.

From Rock Ferry

Prenton Park is a 15 minute walk. Turn right outside the station onto Bedford Road. Continue along Bedford Avenue and Bedford Drive until you reach a road junction shortly after Prenton High School. Continue onto Mount Road and turn right at the first set of traffic lights onto Borough Road.

The ground is five minutes on the left.



TRAVEL BY BUS

BUS SERVICES

38/38A, 471/472 and 41/41A/42 travel to Prenton Park and the surrounding area.

Please see below for individual route information.

New Ferry/Bebington – Prenton

Catch bus service 38/38A to Greenway Road (Prenton Road East junction), which runs up to every 30 minutes.

West Kirby/Hoylake/Moreton/Bidston/Claughton – Prenton

Catch bus service 38/38A to Greenway Road (Prenton Road East junction), which runs up to every 30 minutes.

Mill Park/Bromborough/Rock Ferry/Birkenhead Town Centre – Prenton

Catch bus service 41/41A/42 to Singleton Avenue, which runs up to every 15 minutes.

Heswall/Pensby/Irby/Thingwall/Birkenhead Town Centre – Prenton

Catch bus service 471/472 to Singleton Avenue, which runs up to every 10 minutes.

Liverpool City Centre – Prenton

Catch bus service 471/472 to Singleton Avenue, which runs up to every 10 minutes.

Liverpool City Centre – Prenton

Catch bus service 464 to Devonshire Park, which runs up to every 30 minutes.



FOOD AND DRINK

Cowsheds Catering offers a wide range of food and drink including alcohol options throughout the stadium.

Serving hot and cold drinks, traditional football foods as well as different specials at each home game. We also offer kids snack such as popcorn, sweets and chocolate for those #SWA2 members.

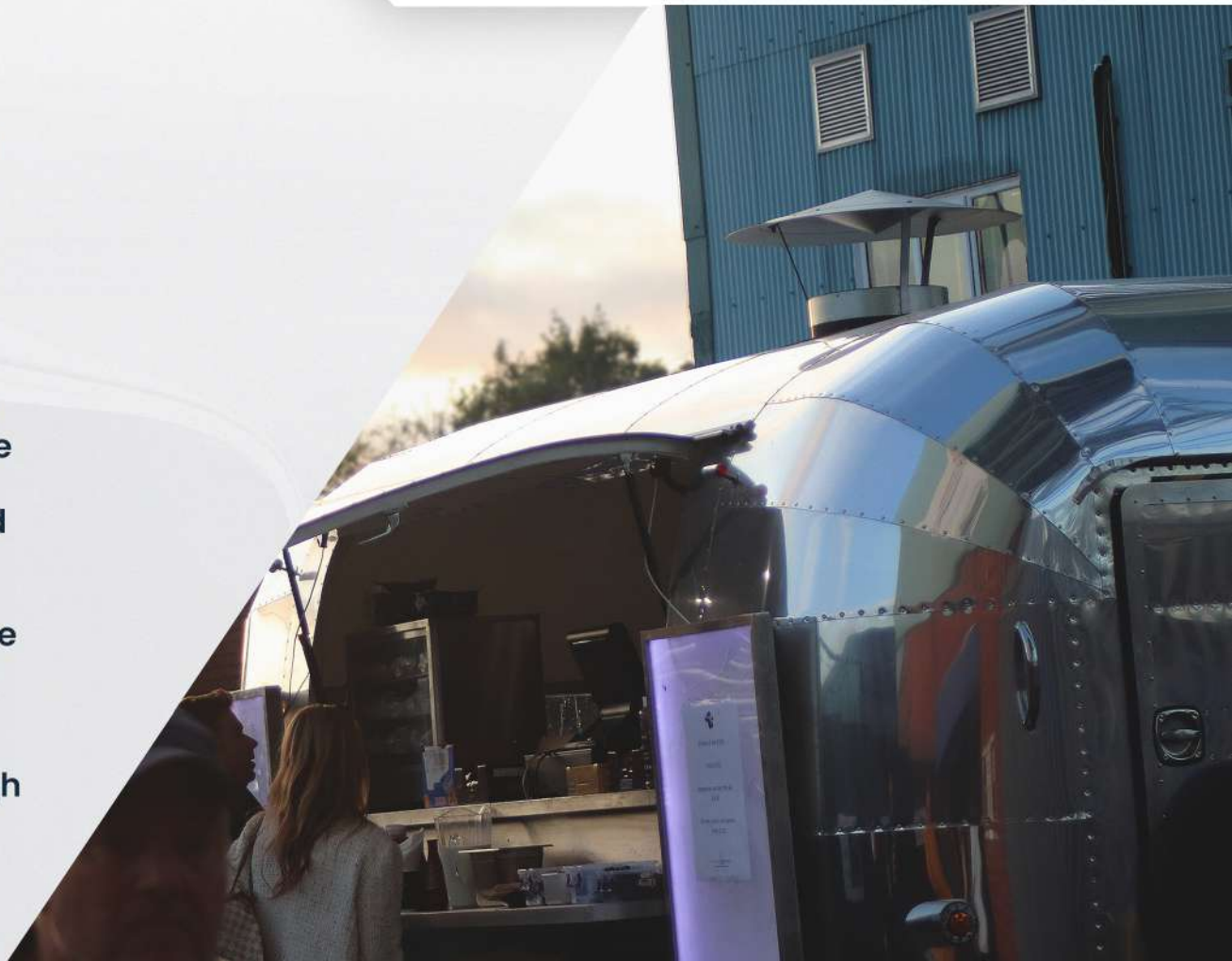
Accessible via the Town Paddock and Town End we have the Bunny Bell Bar and in the Bebington End is the Wembley Bar. Both offer alcoholic and soft drinks within the concourse where fans can watch live Sky Sports TV and football highlights whilst enjoying a drink and soaking up the pre-match atmosphere.

Outside of the stadium is a fan park run by the Tranmere Rovers Trust offering a wide range of craft beers and hot food.

We also have two bars located off the Borough Road entrance, Aldo's and Dixies with the TROSC having a bar inside of Aldo's.



**CASH AND CARD ARE
ACCEPTED AT PRENTON PARK**



HOSPITALITY

Tranmere Rovers Football Club have two hospitality suites located in the Main Stand. Named after Rovers Legends, Ray Mathias and Ian Muir. These are both accessible via lift.

The Ray Mathias Lounge offers a formal setting that offers a premium service which includes the following:

- Two-course meal
- Dedicated table and waiter service
- Premium seats in hospitality seating
- Complimentary match day programme
- The opportunity to meet the Man of the Match
- Unlimited Tea and Coffee

The Ian Muir Bar Lounge is a more relaxed hospitality area and is a great place to enjoy the pre-match atmosphere with a meal and drinks. This lounge includes the following:

The lounge includes the following...

- A match ticket for the game
- One course pre-match meal
- Half time tea, coffee and snack
- Bar facilities to purchase drinks
- Complimentary matchday programme

We also offer hospitality experiences which are a great way to treat your clients or celebrate a special birthday. For more information on these packages please visit tranmererovers.co.uk/commercial or email DebbieQ@tranmererovers.co.uk





Tranmere Rovers Football Club prides itself on being "Wirral's Family Club" and want Prenton Park to be a great day out for both adults and children.

The Club's #SWA2 initiative engages with the next generation of fans and it all starts with making their matchday experience as special as possible.

WIRRAL'S FAMILY CLUB

MY FIRST GAME

Are you attending your first ever football game with us? If so, pop along to the Club Shop before kick off and we have a special certificate to mark the occasion. Alternatively, email our SLO team on slo@tranmererovers.co.uk and they will be in touch with how we can make your day special.

SWA SURPRISES

SWA2 Surprises and first time visitors is an initiative run by our SLO team. They pick our members of the #SWA2 and make their pre-match experience one to remember. This can include sitting in the dugout to watch the first team warm up, reading out the team news over the PA System, message on the scoreboard or getting a special gift signed by the squad.

ROVER THE DOG

You will find out Club Mascot, Rover The Dog, at every home game. He makes his way around the side of the pitch to greet you all and have a picture taken. You will also see Rover at the side of the pitch during the game encouraging the SWA to sing and shout, so make sure you join in and he can hear you.



CLUB SHOP

Located at the front of the stadium is our Official Club Shop and Ticket Office. Here you can purchase Official Merchandise as a souvenir to mark the day.

Open from 10am until kick off and 30 minutes post match.

We hope you have an enjoyable day and for any further ticket or retail information please call us on:

03330 144452

or email

**retailmanager
@tranmererovers.co.uk**





ACCESSIBILITY

At Prenton Park we have changing places toilets as well as stoma friendly toilets in each stand.

We have a quiet room for those who need to take a break from the hustle and bustle of a matchday, for breastfeeding and for those supporters who need a quiet place to pray. Please speak to the nearest stewards if you require to use our quiet room.

Our SLO's offer familiarisation tours during the week ahead of matches for any fans who would benefit from pre match visits - this can include checking different areas before purchasing tickets as well as route planning for arrival/during the game.

You can contact them on Facebook or Twitter @trfcSLO or by email

slo@tranmererovers.co.uk

TRANMERE ROVERS MATCHDAY ITINERARY

10AM SHOP OPENS

12.30PM LOUNGES OPEN

1.30PM TURNSTILES OPEN

FROM 1.30PM SWA SUPRISES

1.30PM GUEST INTERVIEWS IN THE LOUNGES

FROM 1.30PM PLAYERS ARRIVE

2.20PM PLAYERS WARM UP

FROM 1.30PM ROVER THE DOG AT PITCHSIDE



MATCHDAY PROGRAMME

Each matchday you can get your hands on our Official Matchday Programme.

With exclusive player interviews, player stats, an in-depth analysis of both teams and additional features that include a quiz section for the younger fans. This is a great read before and after the game and is a great memento for you to take away from your visit to Prenton Park

The 48 page programme is £3.50 and is available at all our first team league fixtures.

You can purchase the programme inside Prenton Park from our designated programme seller or from the Club Shop.

If you forget to pick up a copy on the day, all leftover programmes are sent to the Club Shop for purchases at a later date.



TRANMERE ROVERS

#TRFC #SWA



VERSUS **Newcastle United**

24.8.2022 / 7.45pm

OFFICIAL MATCHDAY PROGRAMME / SEASON 2022-2023

£3.50

PROGRAMME SPONSOR





TRANMERE ROVERS

SUPPORTER LIASON OFFICERS

Louise and Nina are both season ticket holders at TRFC and volunteer their time to improve the matchday experience at Prenton Park alongside Christine Roberts, Head of Match Day.

In 2022, Louise and Nina won the FSA SLO of the Year Award for their hard work at TRFC.

SLOs are a point of contact for supporters both home and away and offer information and advice on anything match related. They can help facilitate fan engagement structures, advocate for the fans' voice within a club, and liaise with stewards, police, and counterparts at opposition clubs. They are active and available on matchdays.

You can contact our SLO's by emailing:
SLO@tranmererovers.co.uk
Facebook or on Twitter: @TRFCslo



SUPPORTER GROUPS



TROSC

TROSC is the club's official supporters association, ran by the fans for the fans. Since its inception in 2015, the TROSC has introduced a can bar at Aldo's, produced a vast range of retro shirts and merchandise, provided coach travel to over 120 away games and supported with numerous initiatives including lamppost banners, Johnny King stand upgrades and has sponsored the new fan tent. With revenue all generated through memberships and TROSC initiatives, all money raised goes back into the club.

Additionally the TROSC runs regular Q&A sessions with club management and owners and arranges adhoc events such as Christmas parties and post-match entertainment.

TROSC exists to represent fans and provide them a direct voice to the club, but also to provide services to improve matchday experience and bring the players closer to the fans.



TRANMERE TRUST

Formed in 2002, The Tranmere Rovers Trust continues to support Club projects, raise funds for community initiatives and help to enhance the experience at Prenton Park for fans.

We also continue to welcome home and away fans to our Fan Park and are excited to open our new Fan Park in the 23/24 season.

To become a Trust member, supporters can purchase an annual membership or sign up to our 500 Club for £5 each month.

For more information about the Tranmere Trust, visit our website: www.tranmereroverstrust.co.uk or contact the email address: harrisonbentrffc@me.com.



Rover and Out

Rover & Out are the Tranmere Rovers LGBT+ Supporters Group. We want to bring the Football and LGBT+ community together to celebrate diversity and increase LGBT+ visibility at Prenton Park, promoting our club as a safe, welcoming and inclusive environment for all.

We offer a buddy group on match days for supporters who would like to meet before the game for a drink and attend the match with other LGBT+ members of the SWA. Our meeting point is in the fan tent from 1.30 on home match days.

If you would like to play football, they we also offer a none judgemental, fully inclusive and mixed ability team to join who play at Solar Campus every Friday evening from 8pm till 9pm

For more information on Rover & Out then please email: Roverandoutgroup@gmail.com

SUPPORTER GROUPS

DSA

Disabled Rovers is the Tranmere Rovers' Disabled Supporters' Association. We aim to improve the experience of disabled Tranmere fans and those who come with them, as well as providing a friendly social space for our supporters - whatever their impairments - to come together through gatherings and fundraising events.

Any queries relating to the experience of disabled supporters - and those who come with them - can be directed to TranmereRoversDSA@gmail.com.



SouthernSWA

The SouthernSWA exists to;

- Promote the interests of Tranmere Rovers Football Club and its supporters in the London area and elsewhere across the South East of England.
- Support (and generate wherever possible) fund raising opportunities for the benefit of TRFC.
- Provide direct financial support by way of sponsorship or other means to TRFC and any official body, such as the Tranmere Rovers Trust, and Tranmere Rovers Official Supporters Club raised through supporter led activity.
- Provide social activities, functions, interactions and a communication platform for members regarding and with TRFC and official TRFC groups (specifically around South Eastern away games).
- Develop and encourage the growth of the TRFC supporter (individual and other) networks across the UK and internationally.
- Uphold the reputation of TRFC and its fans and promote good relations between members and members of other football supporters' organisations.

We currently have four members on the management team who are striving to achieve the above goals.
goals@mail.com



ZERO TOLERANCE

Tranmere Rovers Football Club have a zero tolerance policy towards hate crime and violence of any kind.

We work hard with our partner organisations to ensure everyone feels welcome and accepted at Prenton Park.

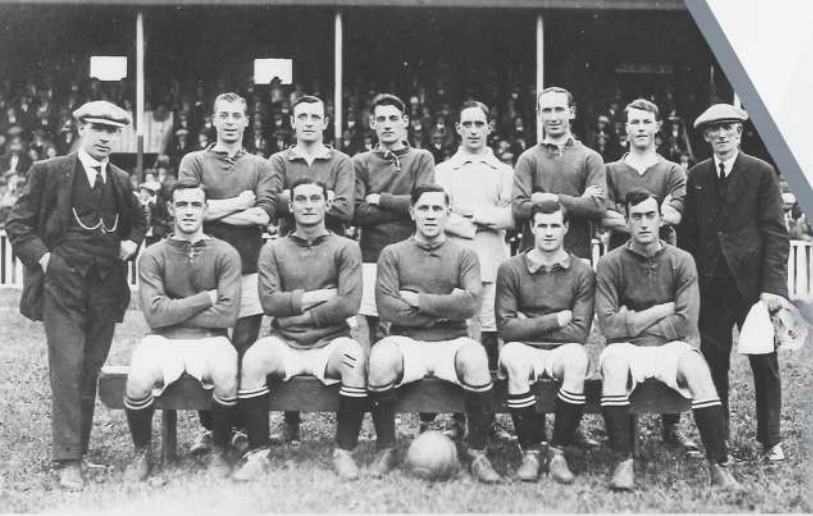
Any one found to be breaking our zero tolerance policy will be removed from the stadium.

Kiosk will close automatically should any unsocial behaviour take place in the concourse.

We operate a no smoking policy at Prenton Park which includes e-vape.

If you see or hear any discriminatory or hateful behaviour on a matchday you can report it in person to a matchday steward or any member of Club staff, or if you prefer, via text or whats app anonymously on our incident line **07399 152692**. **The incident line is monitored constantly throughout the match, enabling the control room to direct cameras and stewards towards the reported area and take appropriate action.**

Please note: Pyrotechnics are not welcome inside of the stadium and anyone found with one on their persons will be removed from the stadium.



CLUB HISTORY

TRANMERE ROVERS

Tranmere Rovers Football Club is proud of its history. From fantastic cup runs to the signing of international players, the Club has been witness to and taken part in many memorable events since it was founded in 1884.

When Lyndhurst Wanderers and Belmont Cricket Club came together, Belmont FC was formed and, under the presidency of James McGaul, the Club won its first match against Brunswick Rovers 4-0 on November 15, 1884.

Less than one year later, the Club changed its name to Tranmere Rovers Football Club and took to the pitch in blue shirts and white shorts at Steeles Field on Borough Road, Birkenhead.

By 1887, Rovers had moved ground to Ravenshaws Field, which was later renamed Prenton Park, our final home before the switch to the current Prenton Park in 1912.

With famous cup runs which included the Leyland Daf final in 1990 against Bristol Rovers to our back to back promotions in 2017/18 and 2018/19.

Tranmere Rovers fans have had a lot to cheer about over the years.



CONTACT US

MEDIA ENQUIRIES

hannah@tranmererovers.co.uk
robertm@tranmererovers.co.uk

COMMENTS, COMPLAINTS OR IDEAS

tellus@tranmererovers.co.uk

TICKET ENQUIRIES

tickets@tranmererovers.co.uk

SHOP ENQUIRIES

shop@tranmererovers.co.uk

INCIDENT LINE

07399 152692

SLOS

slo@tranmererovers.co.uk



Tranmere Rovers



@TranmereRovers



@tranmererovers



**Official
Tranmere Rovers**



@tranmererovers